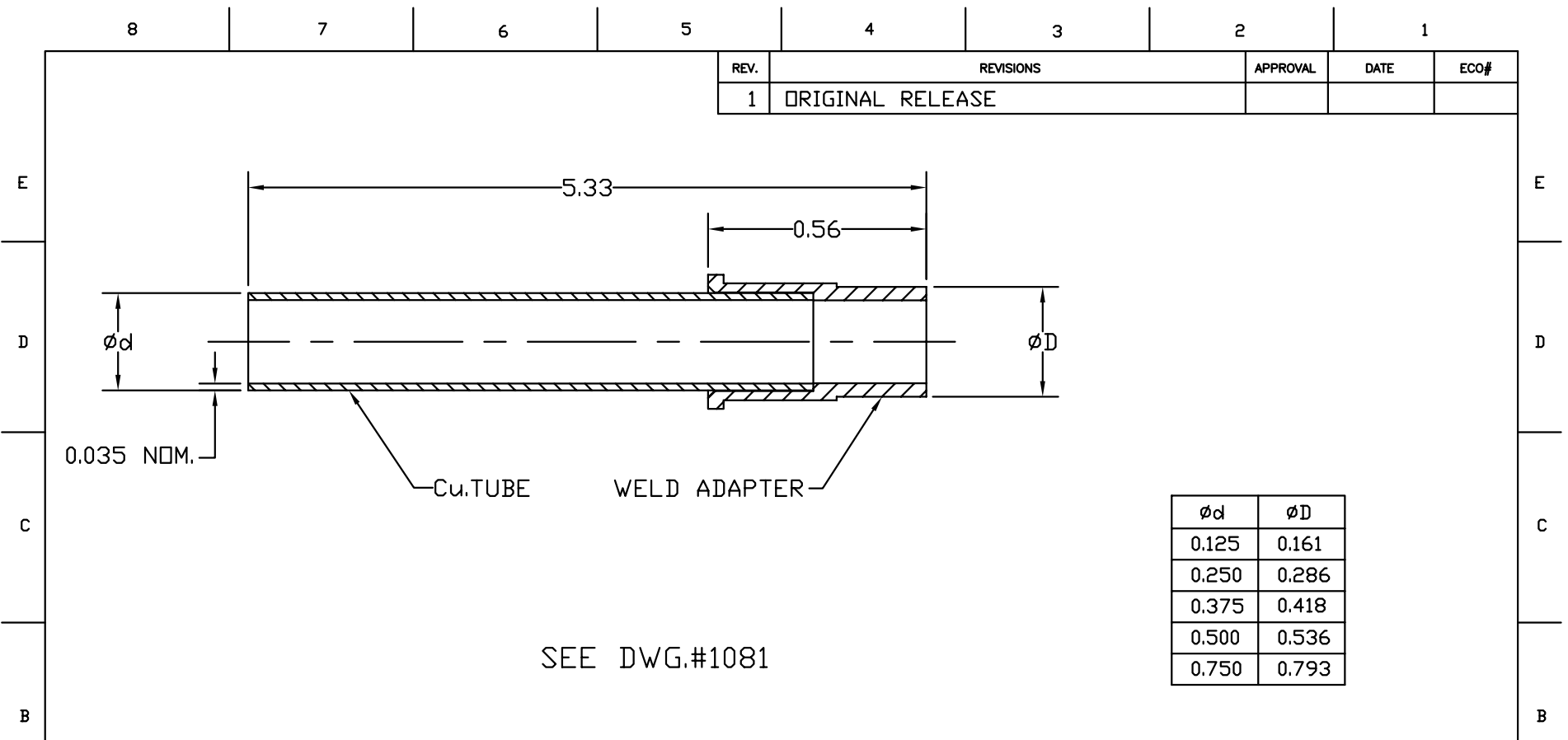




REV.	REVISIONS	APPROVAL	DATE	ECO#
1	ORIGINAL RELEASE			



SEE DWG.#1081

APPROVALS		DATE	12-12-08		
PROJ. ENGR.			 VACUUM PROCESS ENGINEERING Vacuum Process Engineering, Inc. 110 Commerce Circle Sacramento, California 95815 (916) 925-6100 FAX (916) 925-6111		
QLTY. CONTRL.					
MFG.					
NEXT ASSY.			PINCH-OFF (WELD ADAPTER)		
THIRD ANGLE PROJECTION 		INFORMATION SHOWN ON THIS DOCUMENT INCORPORATES PROPRIETARY RIGHTS AND IS NOT TO BE DUPLICATED WHOLLY OR IN PART WITHOUT THE EXPRESS PERMISSION OF VPE, INC.		SIZE B DO NOT SCALE DRAWING	DRAWING No. 1083 REV 1
		SCALE NONE	DR. BY LES.G.	CHK. BY	SHEET 1 OF 1